



System Administration

FACIO Processes User Documentation

Project: FACIO processes
Author: PDQM
Revision:
Created: 1.8.2008
Version, Status: 1.1 Valid
Pages: 6
Document ID: PDQAdministration

Content

1. Document Purpose	3
1.1. Administration Principals	3
2. Installation	4
2.1. Client workstation	4
2.2. Application server	4
3. Define database access	5
3.1. Primary database access	5
3.2. Linked databases	6

Figures

Figure 1 System structure	3
Figure 2 "Set Connection" button	5
Figure 3 Setting database configuration	5

Versions

List of versions after the first official version

Version	Date	Description of changes
1.0	12.6.2006	First draf
1.1	1.8.2008	Chapter about the language administration inserted

Linked information

List of documents and other information sources that relate to the content of this document:

Document ID	Version	Description

1. Document Purpose

Administration guide is intended for end user system administrators responsible for system installation and maintenance.

1.1. Administration Principals

P-D-Q is a database system that can use any relational SQL-compatible database that supports transactions. Currently the following databases are supported:

- Interbase / Firebird
- Microsoft SQL
- MySQL
- Oracle

Structure of the P-D-Q modules is described in Figure 1. Each client computer should have access to the database and if the system is configured to use a file server to store linked files, the client stations should have access to the file server as well.

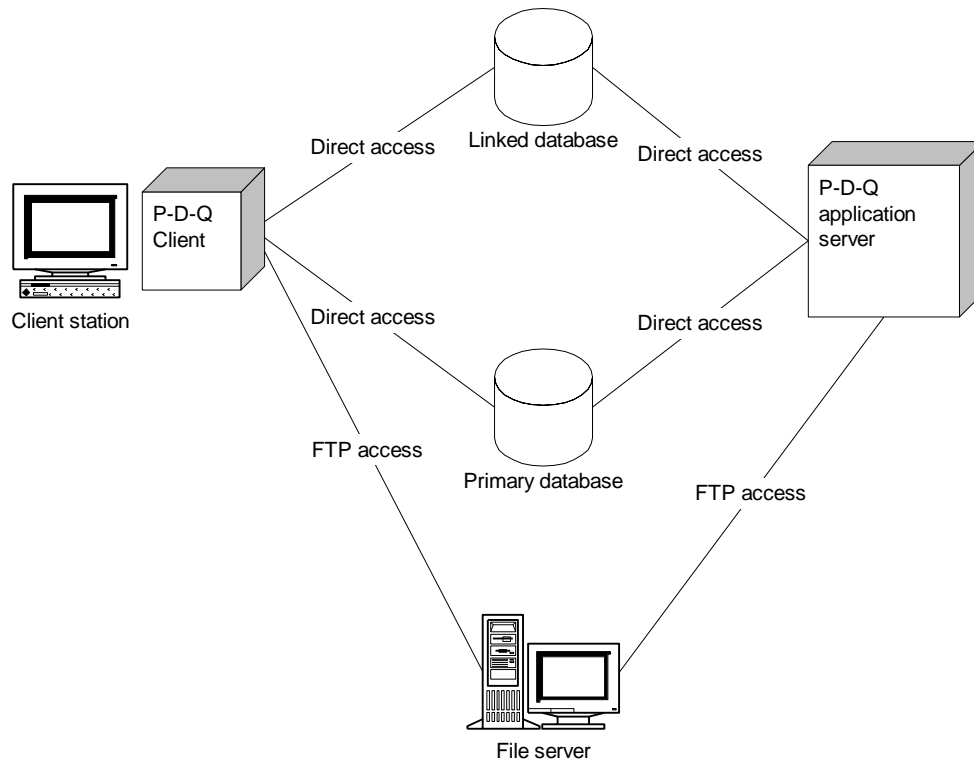


Figure 1 System structure

Users don't use a database account to login to the database but they have their account defined by the P-D-Q.

2. Installation

2.1. Client workstation

The client application is Windows native application. It requires Windows XP or Vista. Typical current application are powerful enough for the client.

The client workstations should have direct access to all linked databases. FACIO processes itself can be installed on the client computer but it is recommended manage client computes to start application from the shared file server. The client application does not require any special configuration and, if necessary, can be simply copied from one computer to another.

2.2. Application server

Application server is a Windows service that requires OS Windows XP, Vista or server NT, or Windows server 2003 or later version.

The service is installed by the command

```
pdqserver.exe /install
```

Alternatively, it can be installed using the batch

```
PDQserverInstall.bat
```

that is placed in the bin directory.

We recommend using application server as a application FACIO server.exe instead of the service for easier monitoring of the system status.

3. Define database access

P-D-Q does not use an ODBC connection to the database. Since both the client and the server access all databases, direct connection to the databases must exist from clients computers as well as from the server where the application server is running.

3.1. Primary database access

All clients uses the same database account to access the database. Access rights are managed by *FACIO processes* internally. Nevertheless, the database account should be configured to enable application access the database. The connection to the primary database can be set by clicking on the button "Set Connection" on the login screen - see Figure 2.



Figure 2 "Set Connection" button

The button opens a asking for the database account password and the open the dialog where all information about the account access should be defined - see Figure 3.

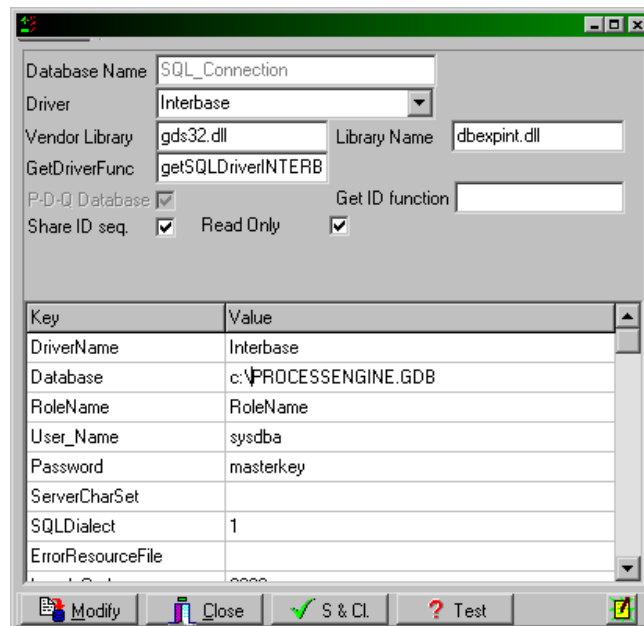


Figure 3 Setting database configuration

The list of required information depends on the database type. The system tries to check linked databases when Driver is set and so there can be time gap after the driver changes. The setting is saved in the file *DbSetting.dbs* that should be stored in the same directory with the P-D-Q executable

files. The file is encrypted and thus the database account and password cannot be extracted from the file.

Access to the database can be changed after it is saved but the system requires the database password to allow editing.

3.2. *Linked databases*

FACIO processes can be linked with several databases and work with data from several data sources. Connection account information to the linked databases is stored in the primary database and can be configured after the login. Open the list of linked databases and add a link to other databases by the same way as connecting to the primary database. The button *Test* can be used to check if the setting is correct.



The remote databases should be defined by the same way as the primary database.

FACIO processes has an internal method how to map object data with the database. External database can be mapped to the internal objects only if the database follows the *FACIO processes* standards. If it does not, it can be accessed from the SQL command in the ECL language but the system does not read/write data automatically.